



# Head Start Program 2013 Annual Report

## About our Head Start Program

Our Head Start Mission is to serve income eligible preschool children and their families by promoting education, self-esteem, socialization, health and community awareness, through screenings, developmentally appropriate experiences, nutritious meals and transportation.

Our Head Start program is administered by Operation: New View Community Action Agency serving families in Delaware, Dubuque, and Jackson Counties. Head Start funding is received from the U.S. Department of Health and Human Services, Administration for Children and Families.

### Fiscal Year 2013 approved budget:

Personnel & Fringe	\$ 1,334,040
Travel	\$ ---
Equipment	\$ ---
Supplies	\$ 14,175
Contractual	\$ 61,450
Other	\$ 132,602
Indirect Cost	<u>\$ 204,896</u>
<b>Total</b>	<b>\$1,747,163</b>

### Training and Technical Assistance

Personnel & Fringe	\$ 11,653
Travel	\$ 6,386
Supplies	\$ 953
Other Costs	\$ 7,140
Indirect Cost	<u>\$ 1,789</u>
<b>Total</b>	<b>\$ 27,921</b>

Fiscal Year 2013 Head Start financial audit performed by Eide Bailly.

**Operation: New View  
Community Action  
Agency**  
1473 Central Avenue  
Dubuque, IA 52001

[www.operationnewview.org](http://www.operationnewview.org)  
Like us on Facebook

### Special points of interest:

- ☺ Funded to serve 250 Children
- ☺ 3 classroom in Delaware County
- ☺ 1 classroom in Jackson County
- ☺ 2 classroom in Dubuque County
- ☺ 8 classrooms in City of Dubuque

## Enrollment

Total Number of Head Start children served  
276 Children served in 255 families

There were 147 three year old children and 129 four year old children that attended Head Start. Thirty-four percent (94) of the children were enrolled for their 2nd year and twenty percent (10 children) were enrolled less than 45 days.

## Enrollment by Eligibility Type

Based on income eligibility (below 100% poverty)	58%
Based on receipt of public assistance (Tanf, SSI)	22%
Status as foster child	1%
Status as homeless	2%
Over Income	9%
Income between 101 and 130% of the Federal Poverty	9%

## Ethnicity/Race

Of the 276 children served by our Head Start Program, 265 children were of non-Hispanic or non-Latino origin while 11 children did have a Hispanic or Latino origin ethnicity.

American Indian or Alaska Native	1
Asian	0
Black/African American	44
Native Hawaiian or Pacific Isl.	6
White	193
Biracial/Multi-racial	24
Other	8

(U.S. Census Bureau states "People who identify their origin as Hispanic, Latino or Spanish may be of any race").

## Non-Federal Match

It was a mild struggle to reach our Non-Federal Match requirement of another successful year of meeting our required non-federal share in-kind match. During the 2013 fiscal year our required match was \$420,752. We projected another great year with in-kind match from the City of Dubuque for renovations at the Engine House, but due to unforeseen concerns we were unable to

## Medical

Of the 276 children served during the 2013–2014 school year there were 209 up-to-date on their schedule of age appropriate preventive and primary health care according to the State of Iowa EPSDT schedule for well-child care.

Health Services—Insurance	
Children enrolled in Medicare	249
Children enrolled in Hawk-I	4
Children with Private Insurance	21
Children with No Insurance	2

count that dollar amount. A huge thank you goes out to all of our Head Start parents/guardians, community members and businesses that helped make this required match a reality.

We had 563 volunteer's donating over 6373 hours of their time in our classrooms, attending parent/family gatherings, policy council meetings, attending field trips and much more.

## Dental

Our Head Start program collaborates with the Visiting Nurse Association (VNA), Dental Hygienist, State of Iowa I-Smile Coordinators in Dubuque, Delaware and Jackson Counties and local dentist to provide dental exams and screenings twice per year to each Head Start child. During the 2013 -2014 school year we had 203 children receive dental preventive dental care.

Transportation	\$ 126,533.28
Materials	\$ 43,372.53
Space	\$ 19,339.95
Vol. Hours	\$ 55,267.78
Other	<u>\$ 176,238.46</u>
<b>Total</b>	<b>\$ 420,752.00</b>

## Screening/Assessment Growth

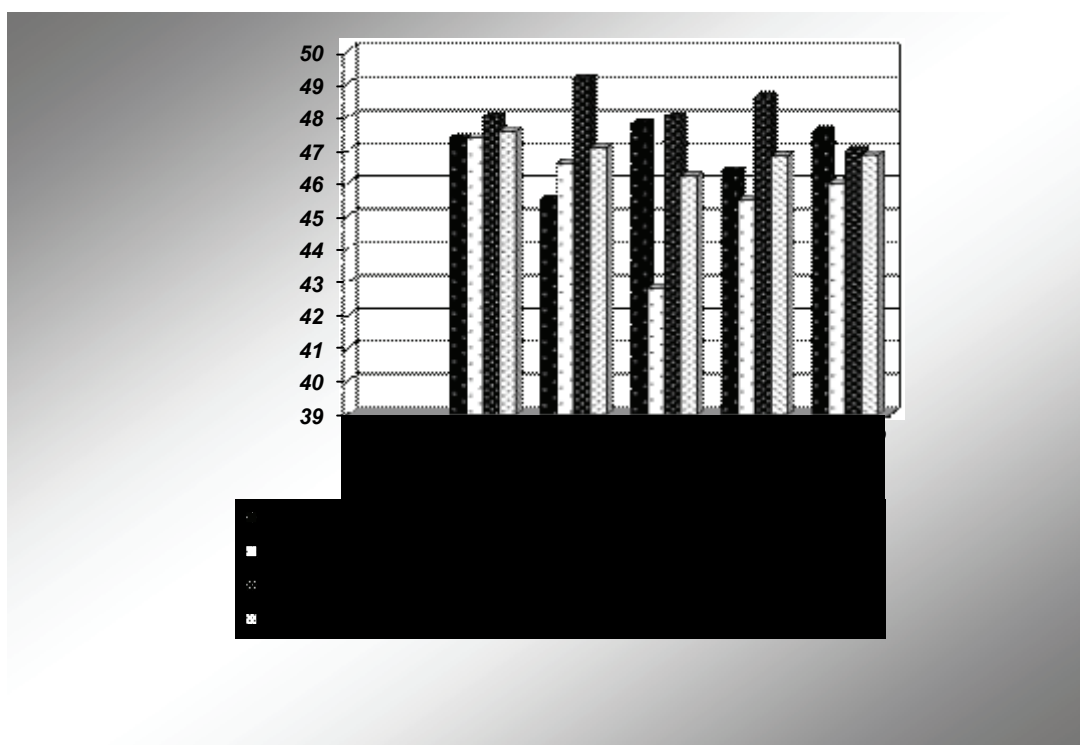
We use the Brigance and Teaching Strategies Gold Creative Curriculum to screen and assess our Head Start children in the areas of Social-Emotional Development; Physical Development; Language Development; Cognitive Development; Literacy; Mathematics; Optional Dimensions for Physical Objectives 4-6.

## Operation: New View Community Action Agency's Head Start Program

Our Head Start program uses the Teaching Strategies GOLD assessment tool to assess all children three times per program year. The assessment is a strength-based approach. Based on observations, data collection, and analysis of the children's progress, we aggregate our programs outcomes. Four times during the program year our teaching staff meets with parents and families to review the data, plan, and revise individual education goals for each child.

Each of these assessments focuses on a number of child learning and development areas, including social & emotional development, physical development, language & literacy development, cognitive development, and mathematics.

### Percentage of Growth in Outcomes for Operation: New View Community Action Agency Head Start Children in 2012/2013 Program Year

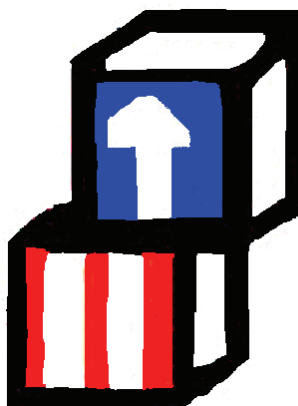


This year the calculations for the Five Domains of the School Readiness Goals were done differently than last year. This year we did not have more than one classroom of strictly three year olds as in past years. Therefore, we were unable to break it down according to the age of the children being served. The numbers are considerably different. The calculations were done by county. The CLASS scores could also be factored in to the explanation of the scores.

The data was broken into four regions. The first is for the classrooms in the City of Dubuque and the two classrooms in Dubuque County, which consist of 9 classrooms, 146 children the second is from the classrooms in Delaware County, which consist of 3 classrooms and 50 children The third is from the centers in Jackson County, which consist of 3 classrooms and 36 children. The final data is for the entire agency consisting of 15 classrooms and 232 children for the 2012-2013 school year.

We used the same eighteen school readiness goals as we used last year to calculate the data. It has been three years since we surveyed parents about the school readiness goals. During our enrollments parents will be surveyed to determine a new set of school readiness goals for the next three years. The eighteen school readiness goals were scored as a percentage: below, meeting, or exceeding the goal. The scoring items of Teaching Strategies GOLD were then aggregated and graphed.

The data shows that less than half the children we are serving are meeting and/or exceeding the current school readiness goals. Language/Literacy development seems to be the lowest scoring domain for our agency. After looking at the Instructional Support Domain, from the spring CLASS data for our agency the scores went down in six of the fifteen classrooms. These teachers received coaching from the CLASS observers and will continue to be coached through the next observation in fall of 2013.



### **Head Start Mission Statement**

We serve eligible preschool children and their families by promoting education, self-esteem, socialization, health and community resource awareness, through screenings, developmentally appropriate experiences, parent involvement opportunities, nutritious meals and transportation.